



Distech Controls Enterprise Solutions

Discover our Premium Professional Services

Are you a Distech Controls System Integrator?

DCES supports our global network of System Integrators by taking the complexity out of deploying Distech Controls' advanced technology solutions.

Our enterprise portfolio includes over 400+ retail and commercial offices within the United States and Canada. We have successfully installed building automation controls in critical facilities controls across 2 continents, 4 countries, and in 3 languages, for the control of over 20M square feet of built space.

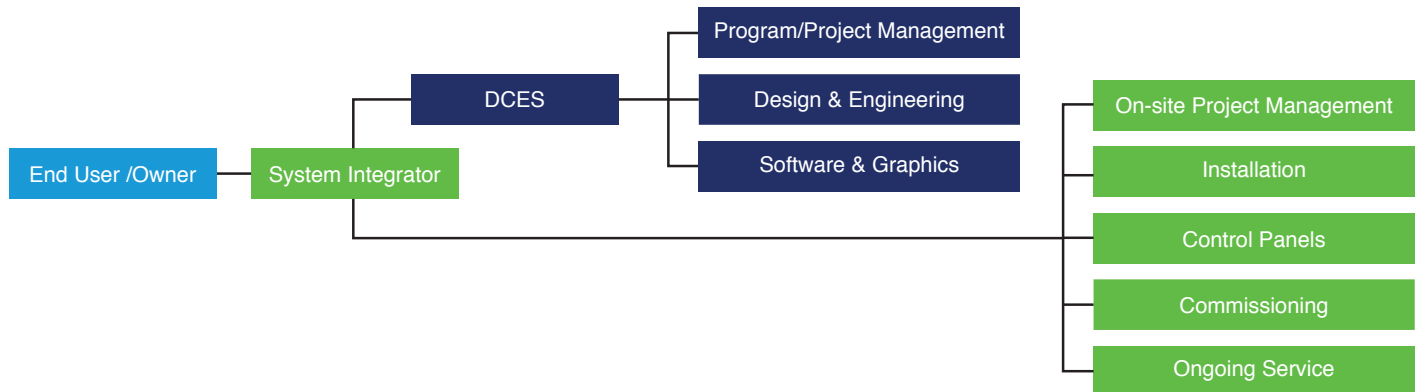
How do we do this?

Our dedicated team works hand in hand with you, our authorized System Integrator, to deliver:

- **A la carte premium professional services** including engineering, software, and technical support.
- **Executive Sales Support** with key decision makers.
- Specialized development via **focused engagement** with our corporate departments including production and R&D.
- Access to **project-proven BAS templates** for multi-site customers.
- Improved operational performance and risk reduction with **Contract Management Services**.

Distech Controls Enterprise Solutions

Support / Program Management



Professional Services for System Integrators

Engineering Support:

- Control drawings with detailed wiring and/or control wiring diagrams
- Bill of materials:
 - Recommended bill of materials (based on construction docs)
- Sequence of operations
- Point names and addresses
- System riser diagrams
- Interface wiring diagrams
- Valve and damper schedules showing sizing, configuration, capacity, and location of equipment
- Data cut sheets for all control systems (for DCES provided BOM)
- Graphic display layout screens (if DCES provides graphics)

Software Support:

- Controller EC-gfxProgram graphical programming
- Niagara station programming
- Third-party integration programming
- IT/Network assistance
- IoT solutions and implementation

Graphics Support:

- N4 graphics
- ENVYSION graphics
- HMI graphics
- Dashboards
- Operator training